



## 2 bed detached bungalow to buy

Robertson Road, North Hykeham, Lincoln,  
Lincolnshire, LN6 8NN

**£155,000** Starting Bid

 x2  x1  x1

Tenure

**Freehold**

Driveway parking

## Property features

- ✓ Being Sold via Secure Sale online bidding. Terms & Conditions apply.
- ✓ Immediate 'exchange of contracts' available
- ✓ Detached two-bedroom bungalow
- ✓ Large corner plot
- ✓ EPC Rating D

## Key Information

- ✓ Council Tax: Band B
- ✓ EPC Rating: D
- ✓ Heating supply: Gas
- ✓ Electric supply: National Grid
- ✓ Water supply: Direct mains water
- ✓ Broadband: Cable
- ✓ Mobile signal: Good

## Description

Being Sold via Secure Sale online bidding. Terms & Conditions apply

Auction sale, Pattinson Auction in connection with Pridea Sales and Lettings are delighted to offer for sale this well-presented two-bedroom detached bungalow, situated in the highly sought-after village of North Hykeham, to the south-west of Lincoln City Centre.

The accommodation briefly comprises an entrance hallway, bright lounge with gas fire, kitchen, two double bedrooms, and a shower room.

Externally, the property benefits from a gated driveway providing off-street parking, a front garden mainly laid to lawn, and a private rear courtyard garden. There are also three useful outbuildings/sheds, all equipped with power and lighting, offering excellent storage or workshop potential.

Located on Robertson Road in the ever-popular area of North Hykeham, the property is ideally positioned for convenient access to a wide range of local amenities, excellent transport links, and the A46. The area is also well served by local schooling, including several primary schools and two secondary schools.

Pattinson Auction are working in Partnership with the marketing agent on this online auction sale and are referred to below as `The Auctioneer`.

This auction lot is being sold either under conditional (Modern) or unconditional (Traditional) auction terms and overseen by the auctioneer in partnership with the marketing agent. The property is available to be viewed strictly by appointment only via the Marketing Agent or The Auctioneer. Bids can be made via the Marketing Agents or via The Auctioneers website.

Please be aware that any enquiry, bid or viewing of the subject property will require your details being shared between both any marketing agent and The Auctioneer in order that all matters can be dealt with effectively.

The property is being sold via a transparent online auction.

In order to submit a bid upon any property being marketed by The Auctioneer, all bidders/buyers will be required to adhere to a verification of identity process in accordance with Anti Money Laundering procedures. Bids can be submitted at any time and from anywhere.

Our verification process is in place to ensure that AML procedure are carried out in accordance with the law.

The advertised price is commonly referred to as a Starting Bid` or Guide Price` and is accompanied by a Reserve Price`. The Reserve Price` is confidential to the seller and the auctioneer and will typically be within a range above or below 10% of the Guide Price` / Starting Bid`.

These prices are subject to change.

An auction can be closed at any time with the auctioneer permitting for the property (the lot) to be sold prior to the end of the auction.

A Legal Pack associated with this particular property is available to view upon request and contains details relevant to the legal documentation enabling all interested parties to make an informed decision prior to bidding. The Legal Pack will also outline the buyers` obligations and sellers` commitments. It is strongly advised that you seek the counsel of a solicitor prior to proceeding with any property and/or Land Title purchase. Auctioneers Additional Comments

In order to secure the property and ensure commitment from the seller, upon exchange of contracts the successful bidder will be expected to pay a non-refundable deposit equivalent to 5% of the purchase price of the property. The deposit will be a contribution to the purchase price. A non-refundable reservation fee up to 7.2% inc VAT (subject to a minimum which could be up to £7,200 inc VAT) is also required to be paid upon agreement of sale. The Reservation Fee is in addition to the agreed purchase price and consideration should be made by the purchaser in relation to any Stamp Duty Land Tax liability associated with overall purchase costs. Both the Marketing Agent and The Auctioneer may believe necessary or beneficial to the customer to pass their details to third party service suppliers, from which a referral fee may be obtained. There is no requirement or indeed obligation to use these recommended suppliers or services.

Council Tax Band: B

Tenure: Freehold

Price: Starting Bid £155,000

Property Type: Detached Bungalow

Parking: Driveway

Construction materials: Brick and block

Roofing type: Clay tiles

Risk of floods and or erosion: No

Flooded in last 5 years: No

Flood defences: No

Planning permissions or proposals for development: No

Coalfield or mining area: No

Listed property: No

Conservation area: No

Public rights of way: No

Adaptions for accessibility: No

Restrictions: No

Required access: No

Heating: Gas

Electric: National Grid

Water: Direct mains water

Sewerage: Standard UK domestic

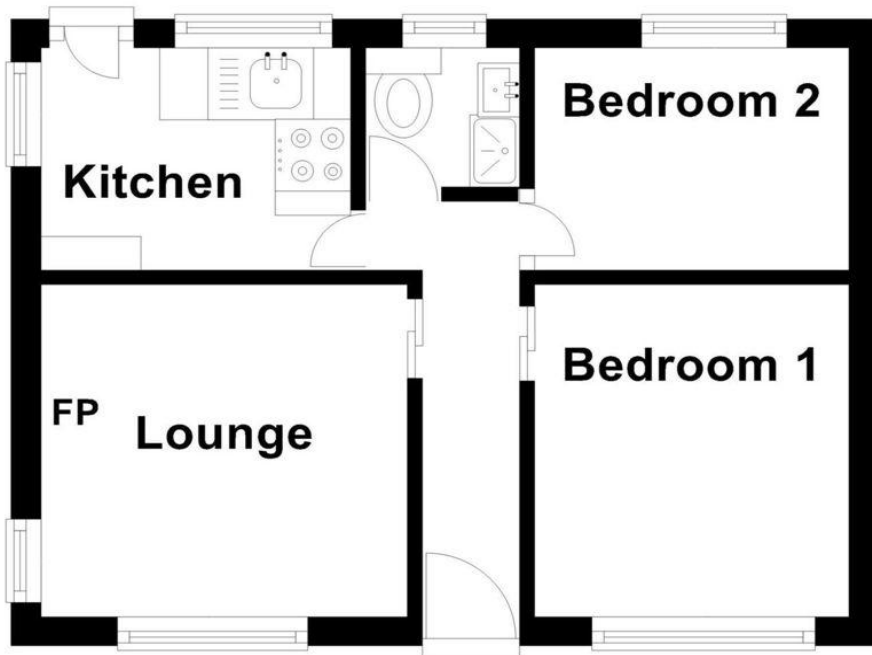
Air conditioning: No

Broadband: Cable


Mobile signal coverage: Good

# Ground Floor

Approx. 0.0 sq. metres (0.0 sq. feet)



Total area: approx. 0.0 sq. metres (0.0 sq. feet)

Energy Efficiency Rating		
	Current	Potential
<i>Very energy efficient - lower running costs</i>		
(92-100) <b>A</b>		
(81-91) <b>B</b>		88
(69-80) <b>C</b>		
(55-68) <b>D</b>	67	
(39-54) <b>E</b>		
(21-38) <b>F</b>		
(1-20) <b>G</b>		
<i>Not energy efficient - higher running costs</i>		
<b>England, Scotland &amp; Wales</b>		EU Directive 2002/91/EC 

Robertson Road, North Hykeham, Lincoln, Lincolnshire, LN6 8NN

Contact your local branch today for more information on this property:

**7 Bath Road, Hounslow, Middlesex, TW5 9AX, Tel: 02085772777, <https://www.lmark.co.uk/>**

These particulars, whilst believed to be accurate are set out as a general outline only for guidance and do not constitute any part of an offer or contract. Intending purchasers should not rely on them as statements of representation of fact, but must satisfy themselves by inspection or otherwise as to their accuracy. No person in this firm's employment has the authority to make or give any representation or warranty in respect of the property.

