



2 bed apartment to buy in BH1

26C Derby Street, Bournemouth, Dorset,
BH1 3QB

£185,000 Starting Bid

 x2  x1  x1

Tenure

Share Of Freehold

Allocated parking

Property features

- ✓ BEING SOLD VIA SECURE SALE
ONLINE BIDDING - T&Cs APPLY
- ✓ Two Double Bedrooms
- ✓ Ground Floor Character
- ✓ Attractive Period Property
- ✓ EPC Rating D

Key Information

- ✓ Council Tax: Band B
- ✓ EPC Rating: D
- ✓ Heating supply: Gas
- ✓ Electric supply: National Grid
- ✓ Water supply: Direct mains water
- ✓ Broadband: FTTP (fibre to the premises)
- ✓ Mobile signal: Good

Description

For Sale via Online Unconditional Auction

Beautiful Two Double Bedroom Character Apartment with Private Courtyard & Share of Freehold

A rare opportunity to acquire this beautifully presented ****ground floor character apartment****, set within an attractive period property in a highly sought-after location less than a mile from both Bournemouth and Boscombe town centres and just a short walk from Boscombe Beach.

Combining period charm with modern living, the property offers a spacious bay-fronted lounge overlooking attractive communal gardens, a contemporary fitted kitchen with direct access to a private courtyard, two generous double bedrooms and a stylish modern bathroom with shower over bath.

Outside, residents benefit from attractive communal gardens, allocated off-road parking, private outdoor space and additional storage shed potential.

The location is ideal for both homeowners and investors, with award-winning beaches, Boscombe Pier, restaurants, cafés, transport links and town centre amenities all within easy reach.

Council Tax Band: B

Tenure: Share Of Freehold

Annual Service Charge Amount: £2,200.00

Shared Ownership Percentage: 25

Price: Starting Bid £185,000

Property Type: Apartment

Parking: Allocated, Off Street

Construction materials: Brick and block

Roofing type: Clay tiles

Risk of floods and or erosion: No

Flooded in last 5 years: No

Flood defences: No

Planning permissions or proposals for development: No

Coalfield or mining area: No

Listed property: No

Conservation area: No

Public rights of way: No

Adaptions for accessibility: No

Restrictions: No

Required access: No

Heating: Gas

Electric: National Grid

Water: Direct mains water

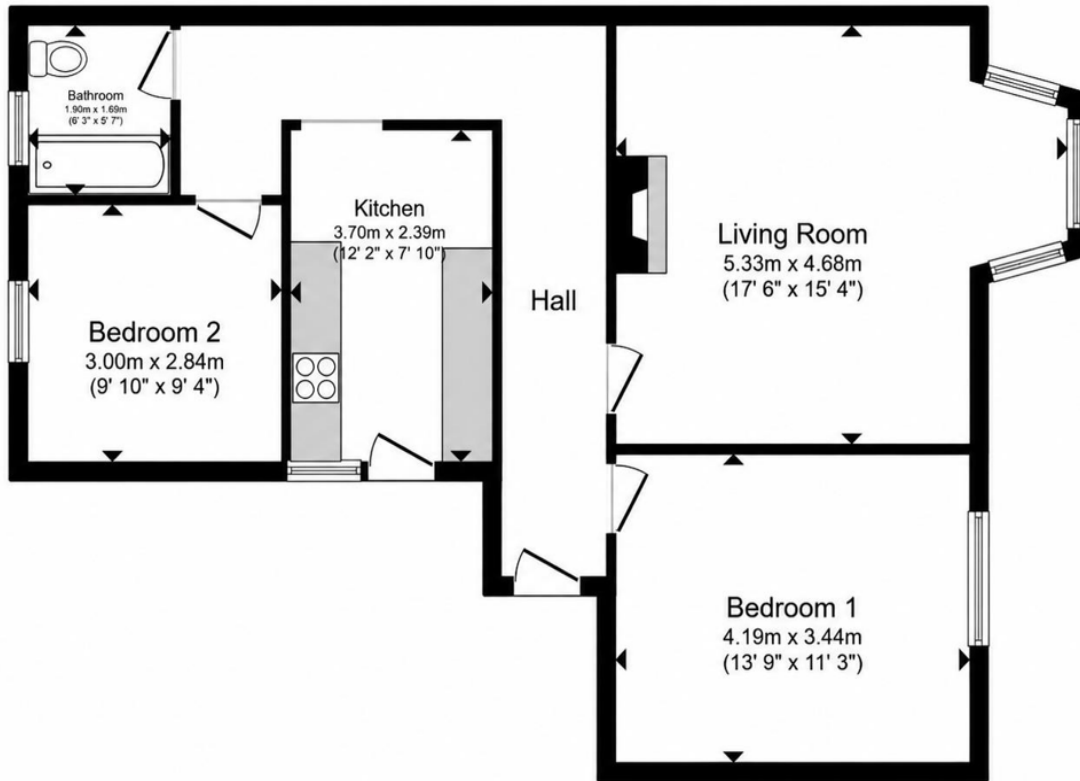
Water meter: No

Sewerage: Standard UK domestic

Air conditioning: No

Broadband: FTTP (fibre to the premises)

Mobile signal coverage: Good



Energy Efficiency Rating		
	Current	Potential
<i>Very energy efficient - lower running costs</i>		
(92-100) A		
(81-91) B		
(69-80) C		71
(55-68) D	60	
(39-54) E		
(21-38) F		
(1-20) G		
<i>Not energy efficient - higher running costs</i>		
England, Scotland & Wales		EU Directive 2002/91/EC

26C Derby Street, Bournemouth, Dorset, BH1 3QB

Contact your local branch today for more information on this property:

7 Bath Road, Hounslow, Middlesex, TW5 9AX, Tel: 02085772777, <https://www.lmark.co.uk/>

These particulars, whilst believed to be accurate are set out as a general outline only for guidance and do not constitute any part of an offer or contract. Intending purchasers should not rely on them as statements of representation of fact, but must satisfy themselves by inspection or otherwise as to their accuracy. No person in this firm's employment has the authority to make or give any representation or warranty in respect of the property.

