



## 2 bed apartment to buy in M15

Caminada House, 3 St Lawrence Street,  
Greater Manchester, M15 4DY

**£100,000** Starting Bid

 x2  x2  x1

Tenure

**Leasehold**

Secure parking

## Property features

- ✓ Being sold via Secure Sale online bidding. Terms & Conditions
- ✓ Two Bedrooms
- ✓ Secure Parking
- ✓ Tenant In Situ
- ✓ EPC Rating D

## Key Information

- ✓ Council Tax: Band B
- ✓ EPC Rating: D
- ✓ Heating supply: Electric
- ✓ Electric supply: National Grid
- ✓ Water supply: Direct mains water

## Description

This contemporary first-floor apartment offers two bedrooms, two bathrooms, and ample natural light. It also boasts underground resident parking. Ideal for first-time buyers or investors seeking a stylish property in a sought-after location.

Timber framed. Situated in a prime residential area, this property features 2 bedrooms and 2 bathrooms, offering a perfect blend of contemporary elegance and style. The spacious interiors are designed to create a welcoming atmosphere, ideal for both relaxation and entertainment.

The apartment boasts a stylish modern kitchen with state-of-the-art appliances, a generous living area that leads to a private balcony, showcasing stunning views of the surrounding area. With allocated parking spaces for convenience, accessing your new home is a breeze.

Located in a sought-after neighbourhood with easy access to local amenities, shops, and transport links, this property is the epitome of modern city living. Make this exquisite apartment yours by participating in the upcoming auction. To schedule a viewing.

Council Tax Band: B

Tenure: Leasehold

Length of Lease: 103

Annual Ground Rent Amount: £100.00

Annual Service Charge Amount: £3,000.00

Price: Starting Bid £100,000

Property Type: Apartment

Parking: Secure

Year built: 2004

Construction materials: Timber frame

Risk of floods and or erosion: No

Flooded in last 5 years: No

Flood defences: No

Planning permissions or proposals for development: No

Coalfield or mining area: No

Listed property: No

Conservation area: No

Public rights of way: No

Adaptions for accessibility: No

Restrictions: No

Required access: No

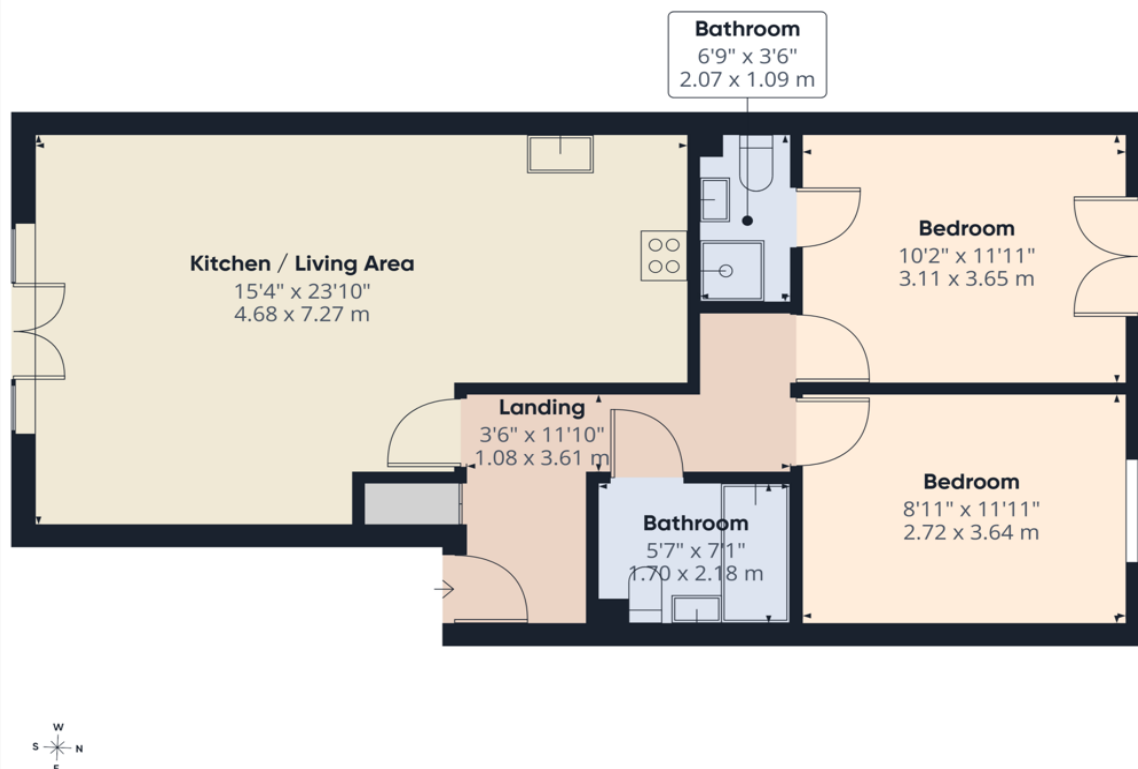
Heating: Electric

Electric: National Grid

Water: Direct mains water

Sewerage: Standard UK domestic

Air conditioning: No



Energy Efficiency Rating		Current	Potential
Very energy efficient - lower running costs			
(92-100)	<b>A</b>		
(81-91)	<b>B</b>		86
(69-80)	<b>C</b>		
(55-68)	<b>D</b>	53	
(39-54)	<b>E</b>		
(21-38)	<b>F</b>		
(1-20)	<b>G</b>		
Not energy efficient - higher running costs			
<b>England, Scotland &amp; Wales</b>		EU Directive 2002/91/EC	

Caminada House, 3 St Lawrence Street, Greater Manchester, M15 4DY

Contact your local branch today for more information on this property:

**7 Bath Road, Hounslow, Middlesex, TW5 9AX, Tel: 02085772777, <https://www.lmark.co.uk/>**

These particulars, whilst believed to be accurate are set out as a general outline only for guidance and do not constitute any part of an offer or contract. Intending purchasers should not rely on them as statements of representation of fact, but must satisfy themselves by inspection or otherwise as to their accuracy. No person in this firm's employment has the authority to make or give any representation or warranty in respect of the property.

