



1 bed apartment to buy in RG1

Rembrandt Way, Reading, Berkshire, RG1 6QW

£170,000 Starting Bid

 x1  x1  x1

Tenure

Leasehold

Allocated parking

Property features

- ✓ Being sold via Secure Sale online bidding. Terms & Conditions apply
- ✓ One Bedroom Upper Floor
- ✓ Modern Refitted Kitchen
- ✓ Less Than 1 Mile To Reading West Station
- ✓ EPC Rating C

Key Information

- ✓ Council Tax: Band C
- ✓ EPC Rating: C
- ✓ Heating supply: Electric
- ✓ Electric supply: National Grid
- ✓ Water supply: Direct mains water
- ✓ Broadband: FTTC (fibre to the cabinet)
- ✓ Mobile signal: Good

Description

Situated in a peaceful cul-de-sac, this well-presented one-bedroom apartment offers convenient access to local amenities, there is a doctors surgery nearby and major road links. Located just over a mile from Reading town centre and less than a mile from the newly refurbished Reading West station, it provides excellent connectivity. The property features a modern, refitted kitchen and bathroom, a spacious double bedroom, and a generous living/dining area. Externally, it benefits from allocated parking and well-maintained communal gardens. EPC rating: C.

Local Information

Coley is an inner-town district located near Reading town centre. It offers good access to the Inner Distribution Road and A33, which are convenient for access to the motorway. A regular bus service is provided to and from the town centre. The area boasts a parade of shops, including take-aways and a convenience store as well as having two primary schools, Coley Park and Coley Primary. The area has an independent Bupa Hospital and good size playing field. Coley park farm has unspoilt views of the Holy Brook River which runs to the south of Coley.

Accommodation

The property is entered through a welcoming porch that leads into an inner hall, complete with a storage cupboard with recently installed immersion tank and access to all rooms.

Outside Space

There are communal gardens and allocated parking to the rear of the property.

Additional Information

Water, mains and electric connected

Reading Borough Council

Council Tax Band C

Council Tax Band: C

Tenure: Leasehold

Length of Lease: 89

Annual Ground Rent Amount: £30.00

Annual Service Charge Amount: £2,800.00

Price: Starting Bid £170,000

Property Type: Apartment

Parking: Allocated

Construction materials: Brick and block

Roofing type: Slate tiles

Heating: Electric

Electric: National Grid

Water: Direct mains water

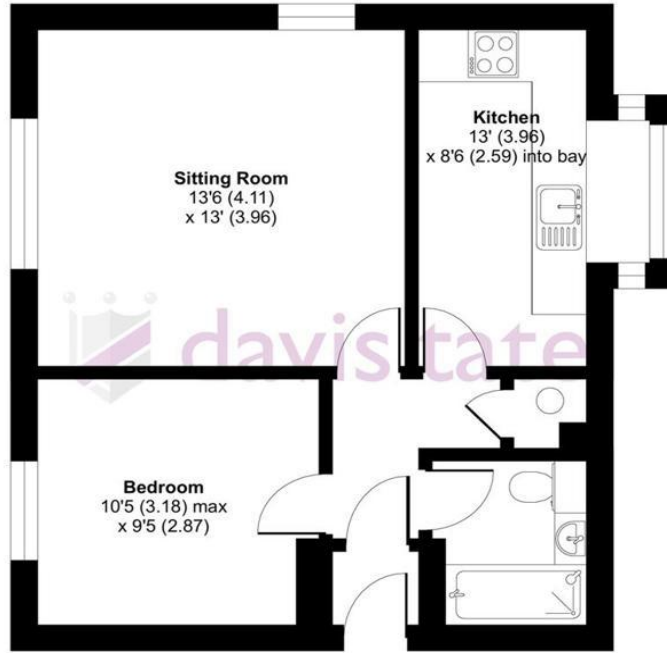
Water meter: No

Sewerage: Standard UK domestic

Air conditioning: No

Broadband: FTTC (fibre to the cabinet)

Mobile signal coverage: Good



FIRST FLOOR

Floor plan produced in accordance with RICS Property Measurement 2nd Edition, Incorporating International Property Measurement Standards (IPMS2 Residential). © nchecon 2025. Produced for Davis Tate. REF: 1267408

Energy Efficiency Rating		
	Current	Potential
<i>Very energy efficient - lower running costs</i>		
(92-100) A		
(81-91) B		
(69-80) C	76	80
(55-68) D		
(39-54) E		
(21-38) F		
(1-20) G		
<i>Not energy efficient - higher running costs</i>		
England, Scotland & Wales	EU Directive 2002/91/EC	

Rembrandt Way, Reading, Berkshire, RG1 6QW

Contact your local branch today for more information on this property:

7 Bath Road, Hounslow, Middlesex, TW5 9AX, Tel: 02085772777, <https://www.lmark.co.uk/>

These particulars, whilst believed to be accurate are set out as a general outline only for guidance and do not constitute any part of an offer or contract. Intending purchasers should not rely on them as statements of representation of fact, but must satisfy themselves by inspection or otherwise as to their accuracy. No person in this firm's employment has the authority to make or give any representation or warranty in respect of the property.

